



**POELSAN®**



**YASSI DAMLA SULAMA  
EK PARÇALARI**  
DRIP TAPE FITTINGS

# Poelsan Dünya Firmalarıyla Rekabet Ediyor...

- +Poelsan, 1994 yılında henüz ülkemizde üretimi yapılmadığı için ithal edilen Polietilen Kangal Boru Bağlantı Adaptörlerini, kendi tesisinde üreterek piyasaya sunan ilk firma olmuştur.

Poelsan ürünleri, başta peyzaj sektörü olmak üzere, içme suyu şebekelerinde, tarım alanlarında, seralarda, damla sulama sistemlerinde güvenle kullanılabilir.

Poelsan, 52.000 m<sup>2</sup> alanda yıllık 9.500 ton plastik işleme kapasitesiyle üretim yapmaktadır. Poelsan, yurt içinde tüm illere yayılmış yaklaşık 400 bayi ile çalışmakta ve 56 ülkeye ihracat yapmaktadır.

Poelsan, 2.000'in üzerinde ürün çeşidine sahiptir ve sektördeki yeniliklere bağlı olarak mevcut ürün çeşidini sürekli olarak arttırmayı ve sektöründe bir dünya markası olmayı hedeflemektedir.

# Poelsan is in the Global Market...

- +Poelsan is the first company that produced and marketed the Compression Fittings for PE Roll Pipes at its own plant, as the mentioned products cannot be produced in the country and consequently been imported up to the year 1994.

Our products can be used safely in the areas of landscaping, potable water networks, agricultural irrigation, drip irrigation and greenhouses.

Poelsan makes production in 52.000 m<sup>2</sup> area with its annual plastic process of 9.500 tones. Poelsan cooperates with 400 domestic distributors overall provinces in Turkey and also exports to 56 countries presently.

Poelsan has a wide product range consisting of more than 2.000 items and our company aims to extend its current product range consistently depending on the developments in the sector and to be a global brand.



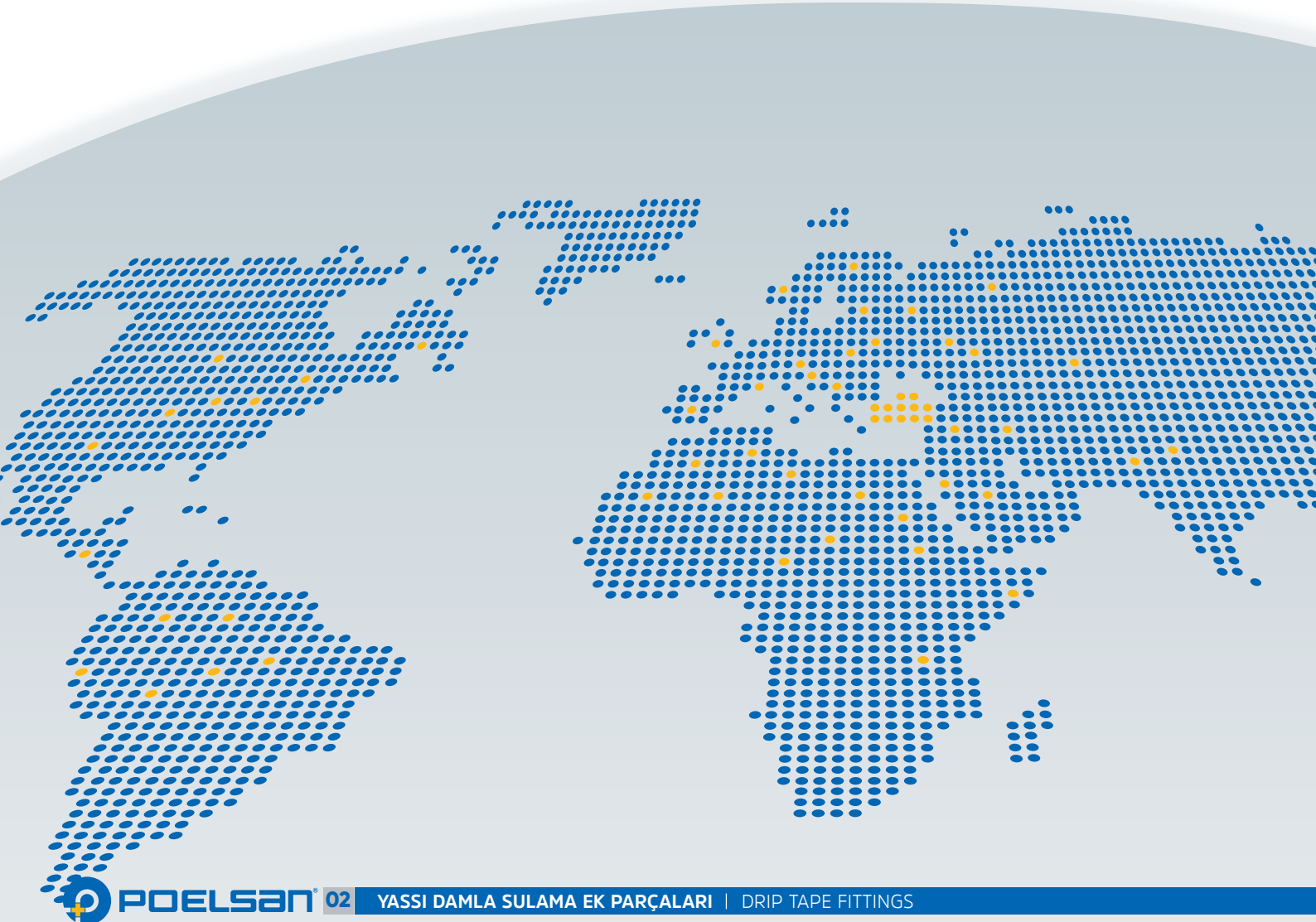
# SEKTÖRÜNDE DÜNYA MARKASI

WORLD'S LEADING BRAND IN THE INDUSTRY



**56** 2.000 Üzerinde Ürün Çeşidi  
ÜLKEYE İHRACAT

More than 2.000 products type  
in 56 countries



POELSAN®

02

YASSI DAMLA SULAMA EK PARÇALARI | DRIP TAPE FITTINGS

ALMANYA + ARJANTİN + ARNAVUTLUK + AVUSTRALYA + AZERBAYCAN  
+ BELARUS + BOLİVYA + BULGARİSTAN + ENDONEZYA + ERMENİSTAN  
ETİYOPYA + FAS + FİLİSTİN + FRANSA + GÜRCİSTAN + IRAK + İRAN  
+ İSPANYA + İSRAİL + İTALYA + KARADAĞ + KATAR + KAZAKİSTAN  
KIBRIS + KIRGIZİSTAN + KOSOVA + KUVEYT + LİBYA + LÜBNAN  
+ MACARİSTAN + MISIR + MOLDOVA + NORVEÇ + PAKİSTAN + PERU +  
POLONYA + PORTEKİZ + ROMANYA + RUSYA + SIRBİSTAN + SURİYE  
+ SUUDİ ARABİSTAN + TAYLAND + TUNUS + TÜRKMENİSTAN + UKRAYNA +  
ÜRDÜN + VENEZUELA + YEMEN + YENİ ZELANDA + YUNANİSTAN  
ALBANIA + ARGENTINA + ARMENIA + AUSTRALIA + AZERBAIJAN  
+ BELARUS + BOLIVIA + BULGARIA + CYPRUS + EGYPT + ETHIOPIA +  
FRANCE + GEORGIA + GERMANY + GREECE + HUNGARY + INDONESIA  
+ IRAN + IRAQ + ISRAEL + ITALY + JORDAN + KAZAKHSTAN +  
KIRGHIZSTAN + KOSOVO + KUWAIT + LEBANON + LIBYA  
MOLDOVA + MONTENEGRO + MOROCCO + NEW ZEALAND  
NORWAY + PAKISTAN + PALESTINE  
PERU + POLAND + PORTUGAL + QATAR  
ROMANIA + RUSSIA + SAUDI ARABIA  
SERBIA + SPAIN + SYRIA  
THAILAND + TUNISIA  
TURKMENISTAN  
+ UKRAINE  
VENEZUELA  
YEMEN

# YASSI DAMLA SULAMA EK PARÇALARI

DRIP TAPE FITTINGS

КАПЕЛЬНАЯ ЛЕНТА

قطع إضافية لتجهيزات لخط تنقيط امياه الأفقي

## Özellikler

- + Darbelere karşı dayanıklı, yüksek kaliteli polipropilen hammaddeden üretilmiştir.
- + Ø17 mm ve Ø22 mm Yassı Damla Sulama Borularında kullanılır.
- + Grommet Conta ile çıkış almak için kullanılacak grommet contalı ürün çeşidine göre delik çapı 16 mm veya 20 mm olacak şekilde boru delinmelidir.
- + Contasız Çıkış, Layflat ve Alçak Yoğunluklu Polietilen (AYPE) Borulardan (Düz Damla Sulama Borusu), Ø17 mm ve Ø22 mm Yassı Damla Sulama Borularına çıkış almak için kullanılır. Contasız Çıkış Ucu ile çıkış almak için boru, delik çapı 8 mm olacak şekilde delinmelidir.
- + UV ışınlarını geçirmediği için yosunlanmaya ve bakteri üremesine izin vermez.
- + İç yüzeyleri homojen ve gözeneksizdir.
- + Suyun kokusunu ve tadını değiştirebilecek hiçbir yabancı madde içermez.

## Specifications

- + It has been produced from high quality polypropylene raw material and it has resistance to impact.
- + Used with Ø17 mm and Ø22 mm Tape Driplines.
- + For a proper offtake with the Grommet Gasket, the pipe should be punched 16 mm or 20 mm according to the Grommet Gasket to be used.
- + The items with offtake without gasket are used for joining the Layflat and Low Density Polyethylene (LDPE) Pipes (Without Drip Irrigation Pipe) with Flat Drip Irrigation Pipe (Ø17 mm & Ø22 mm). For a proper offtake, the pipe should be punched 8 mm.
- + They prevent alga and bacteria forming due to UV proof (ultraviolet beam) structure.
- + It has a homogeneous and non-porous inner surface.
- + It does not contain any foreign substance which can change the taste or the smell of the water.



TS EN ISO 9261



# YASSI DAMLA SULAMA EK PARÇALAR / DRIP TAPE FITTINGS

KOD CODE	d x d SIZE-mm	AMBALAJ ADEDİ PACKING QUANTITY	KOLİ ADEDİ BOX QUANTITY	ÇUVAL ADEDİ SACK QUANTITY
17122	17 x 17	100	2400	3000
17144	22 x 22	100	1100	1500
17155	25 x 25	100	800	1200

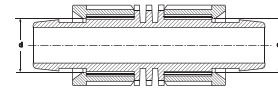


## YASSI NİPEL

TAPE NIPPLE

РАСПРЕДЕЛИТЕЛЬНЫЙ НИППЕЛЬ ДЛЯ КАПЕЛЬНОЙ ЛЕНТЫ

نبل الوصلة تنقيط مسطحة



KOD CODE	d x G SIZE-mm	AMBALAJ ADEDİ PACKING QUANTITY	KOLİ ADEDİ BOX QUANTITY	ÇUVAL ADEDİ SACK QUANTITY
17221	17 x 1/2"	100	2600	3200
17222	17 x 3/4"	100	2400	3000
17242	22 x 3/4"	100	1700	2200
17252	25 x 3/4"	100	1200	1700

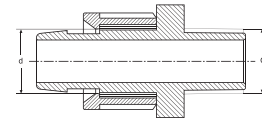


## YASSI - ERKEK NİPEL

TAPE - MALE NIPPLE

НИПЕЛЬ КАПЕЛЬНАЯ ЛЕНТА - «ШТУЦЕР»

وصلة تنقيط مسطحة - نبل ذكر



KOD CODE	d x d <sub>1</sub> SIZE-mm	AMBALAJ ADEDİ PACKING QUANTITY	KOLİ ADEDİ BOX QUANTITY	ÇUVAL ADEDİ SACK QUANTITY
17322	17 x 16	100	1700	2200
17344	22 x 20	100	1200	1600
17354	25 x 20	100	1100	1500

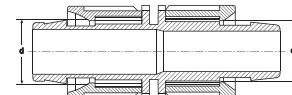


## YASSI - DAMLAMA NİPEL

TAPE - DRIPLINE NIPPLE

НИПЕЛЬ КАПЕЛЬНАЯ ЛЕНТА - ДЛЯ ТРУБЫ КАПЕЛЬНОГО ПОЛИВА

وصلة تنقيط مسطحة - نبل ذكر



قطع إضافية لتجهيزات لخط تنقيط المياه الأفقي / КАПЕЛЬНАЯ ЛЕНТА

# YASSI DAMLA SULAMA EK PARÇALAR / DRIP TAPE FITTINGS

قطع إضافية لتجهيزات لخط تنقيط المياه الأفقي / КАПЕЛЬНАЯ ЛЕНТА

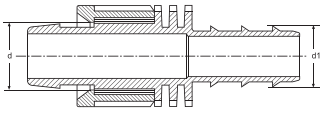


## YASSI - KURTAĞZI NİPEL

TAPE - BARBED NIPPLE

НИПЕЛЬ КАПЕЛЬНАЯ ЛЕНТА - РЕБРИСТЫЙ

وصلة تنقيط مسطحة - نبل التعشيق



KOD CODE	d x d <sub>1</sub> SIZE-mm	AMBALAJ ADEDİ PACKING QUANTITY	KOLİ ADEDİ BOX QUANTITY	ÇUVAL ADEDİ SACK QUANTITY
17422	17 x 16	100	2600	3400
17444	22 x 20	100	1400	1800
17454	25 x 20	100	1200	1500

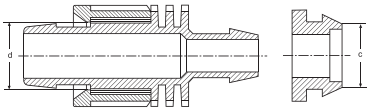


## YASSI - GROMMET NİPEL

TAPE - GROMMET NIPPLE

НИПЕЛЬ КАПЕЛЬНАЯ ЛЕНТА - УПЛОТНИТЕЛЬНОЕ КОЛЬЦО

وصلة تنقيط مسطحة - نبل حلقة التثبيت



KOD CODE	d x c SIZE-mm	AMBALAJ ADEDİ PACKING QUANTITY	KOLİ ADEDİ BOX QUANTITY	ÇUVAL ADEDİ SACK QUANTITY
17522	17 x 16	100	2500	3000
17544	22 x 20	100	1200	1700

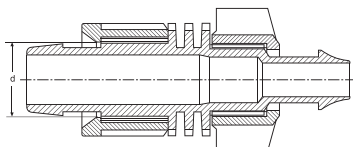


## YASSI - CONTASIZ ÇIKIŞ NİPELİ

TAPE - OFFTAKE NIPPLE WITHOUT GASKET

НИПЕЛЬ КАПЕЛЬНАЯ ЛЕНТА - ПОДЖИМ

وصلة تنقيط مسطحة - نبل المسرب

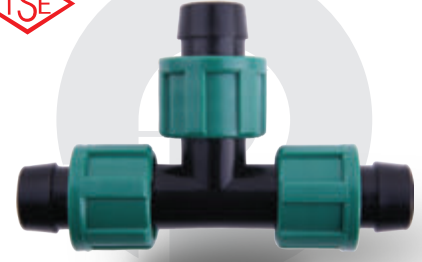


KOD CODE	d SIZE-mm	AMBALAJ ADEDİ PACKING QUANTITY	KOLİ ADEDİ BOX QUANTITY	ÇUVAL ADEDİ SACK QUANTITY
17562	17	100	2200	2700
17584	22	100	1200	1700

# YASSI DAMLA SULAMA EK PARÇALAR / DRIP TAPE FITTINGS

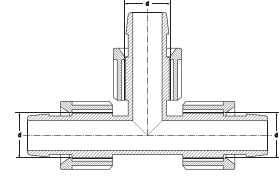
قطع إضافية لتجهيزات لخط تنقيط المياه الأفقي / КАПЕЛЬНАЯ ЛЕНТА /

KOD CODE	d x d x d SIZE-mm	AMBALAJ ADEDİ PACKING QUANTITY	KOLİ ADEDİ BOX QUANTITY	ÇUVAL ADEDİ SACK QUANTITY
17622	17 x 17 x 17	100	1200	1700
17655	25 x 25 x 25	50	400	600



**YASSI TE**  
TAPE TEE

ТРОЙНИК ДЛЯ КАПЕЛЬНОЙ ЛЕНТЫ  
وصلة تنقيط مسطحة تي

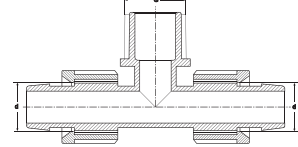


KOD CODE	d x G x d SIZE-mm	AMBALAJ ADEDİ PACKING QUANTITY	KOLİ ADEDİ BOX QUANTITY	ÇUVAL ADEDİ SACK QUANTITY
17721	17 x 1/2" x 17	100	1400	1900
17722	17 x 3/4" x 17	100	1200	1700
17723	17 x 1" x 17	100	1100	1500
17751	25 x 1/2" x 25	50	500	700
17752	25 x 3/4" x 25	50	500	700
17753	25 x 1" x 25	50	500	700



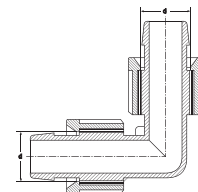
**YASSI - ERKEK TE**  
TAPE - MALE TEE

ТРОЙНИК КАПЕЛЬНАЯ ЛЕНТА - «ШТУЦЕР»  
وصلة تنقيط مسطحة - تي ذكر



**YASSI DİRSEK**  
TAPE ELBOW

КОЛЕНО ДЛЯ КАПЕЛЬНОЙ ЛЕНТЫ  
كوع وصلة تنقيط مسطحة



KOD CODE	d x d SIZE-mm	AMBALAJ ADEDİ PACKING QUANTITY	KOLİ ADEDİ BOX QUANTITY	ÇUVAL ADEDİ SACK QUANTITY
17822	17 x 17	100	2000	2600
17855	25 x 25	100	800	1000



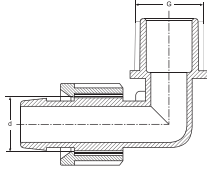
# YASSI DAMLA SULAMA EK PARÇALAR / DRIP TAPE FITTINGS

قطع إضافية لتجهيزات لخط تنقيط المياه الأفقي / КАПЕЛЬНАЯ ЛЕНТА



## YASSI - ERKEK DİRSEK

TAPE - MALE ELBOW  
КОЛЕНО КАПЕЛЬНАЯ ЛЕНТА - «ШТУЦЕР»  
وصلة تنقيط مسطحة - كوع ذكر

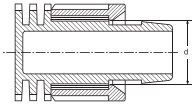


KOD CODE	d x G SIZE-mm	AMBALAJ ADEDİ PACKING QUANTITY	KOLİ ADEDİ BOX QUANTITY	ÇUVAL ADEDİ SACK QUANTITY
17921	17 x 1/2"	100	2400	3000
17922	17 x 3/4"	100	2000	2600
17951	25 x 1/2"	100	1100	1500
17952	25 x 3/4"	100	1100	1400
17953	25 x 1"	100	1000	1400



## YASSI KÖR TAPA

TAPE END CAP  
ЗАГЛУШКА ДЛЯ КАПЕЛЬНОЙ ЛЕНТЫ  
سدادة نهاية لوصلة تنقيط مسطحة

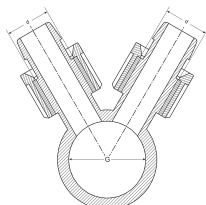


KOD CODE	d SIZE-mm	AMBALAJ ADEDİ PACKING QUANTITY	KOLİ ADEDİ BOX QUANTITY	ÇUVAL ADEDİ SACK QUANTITY
18022	17	100	3600	4800
18044	22	100	1800	2500
18055	25	100	1600	2200



## YASSI DAMLAMA ÇOKLU DAĞITIM NİPELİ

TAPE MULTICOUPLING NIPPLE  
РАСПРЕДЕЛИТЕЛЬНЫЙ НИППЕЛЬ ДЛЯ КАПЕЛЬНОЙ ЛЕНТЫ  
نبل لوصلة التنقيط ذات التوزيع المتعدد



KOD CODE	d x G SIZE-mm	AMBALAJ ADEDİ PACKING QUANTITY	KOLİ ADEDİ BOX QUANTITY	ÇUVAL ADEDİ SACK QUANTITY
18122	2 / 17 x 1"	25	900	1050
18124	2 / 22 x 1"	25	600	700
18125	2 / 25 x 1"	25	450	575

# YASSI DAMLA SULAMA EK PARÇALAR / DRIP TAPE FITTINGS

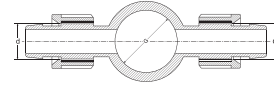
KOD CODE	d x G SIZE-mm	AMBALAJ ADEDİ PACKING QUANTITY	KOLİ ADEDİ BOX QUANTITY	ÇUVAL ADEDİ SACK QUANTITY
18127	2T / 22 x 1"	25	450	600



## YASSI DAMLAMA ÇOKLU DAĞITIM NİPELİ

TAPE MULTICOUPLING NIPPLE  
РАСПРЕДЕЛИТЕЛЬНЫЙ НИППЕЛЬ ДЛЯ КАПЕЛЬНОЙ ЛЕНТЫ

نبل لوصلة التنقيط ذات التوزيع المتعدد



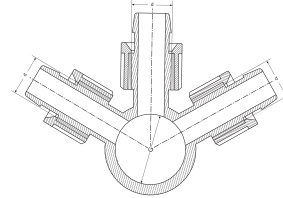
KOD CODE	d x G SIZE-mm	AMBALAJ ADEDİ PACKING QUANTITY	KOLİ ADEDİ BOX QUANTITY	ÇUVAL ADEDİ SACK QUANTITY
18132	3 / 17 x 1"	25	650	825
18134	3 / 22 x 1"	25	400	525
18135	3 / 25 x 1"	25	325	450



## YASSI DAMLAMA ÇOKLU DAĞITIM NİPELİ

TAPE MULTICOUPLING NIPPLE  
РАСПРЕДЕЛИТЕЛЬНЫЙ НИППЕЛЬ ДЛЯ КАПЕЛЬНОЙ ЛЕНТЫ

نبل لوصلة التنقيط ذات التوزيع المتعدد



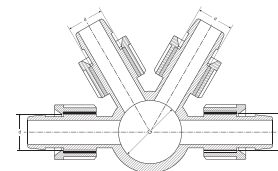
KOD CODE	d x G SIZE-mm	AMBALAJ ADEDİ PACKING QUANTITY	KOLİ ADEDİ BOX QUANTITY	ÇUVAL ADEDİ SACK QUANTITY
18142	4 / 17 x 1"	25	500	700
18144	4 / 22 x 1"	25	300	400
181444	4 / 25 x 1"	25	250	350



## YASSI DAMLAMA ÇOKLU DAĞITIM NİPELİ

TAPE MULTICOUPLING NIPPLE  
РАСПРЕДЕЛИТЕЛЬНЫЙ НИППЕЛЬ ДЛЯ КАПЕЛЬНОЙ ЛЕНТЫ

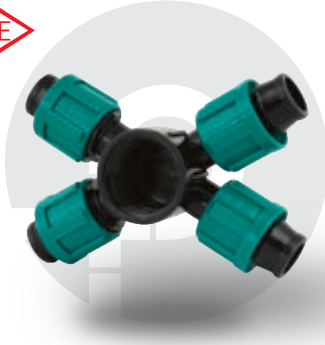
نبل لوصلة التنقيط ذات التوزيع المتعدد



قطع إضافية لتجهيزات لخط تنقيط المياه الأفقي / КАПЕЛЬНАЯ ЛЕНТА

# YASSI DAMLA SULAMA EK PARÇALAR / DRIP TAPE FITTINGS

قطع إضافية لتجهيزات لخط تنقيط المياه الأفقي / КАПЕЛЬНАЯ ЛЕНТА



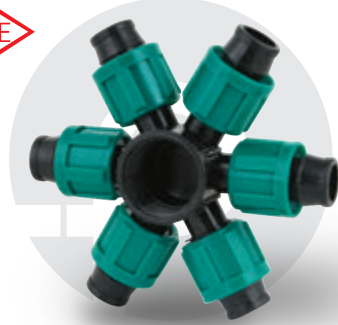
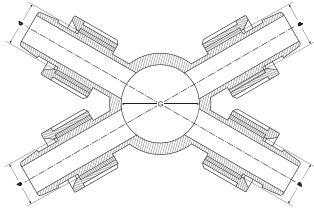
KOD CODE	d x G SIZE-mm	AMBALAJ ADEDİ PACKING QUANTITY	KOLİ ADEDİ BOX QUANTITY	ÇUVAL ADEDİ SACK QUANTITY
18145	4X / 17 x 1"	25	550	675
18147	4X / 22 x 1"	25	300	400
18148	4X / 25 x 1"	25	250	325

## YASSI DAMLAMA ÇOKLU DAĞITIM NİPELİ

TAPE MULTICOUPLING NIPPLE

РАСПРЕДЕЛИТЕЛЬНЫЙ НИППЕЛЬ ДЛЯ КАПЕЛЬНОЙ ЛЕНТЫ

نبل لوصلة التنقيط ذات التوزيع المتعدد



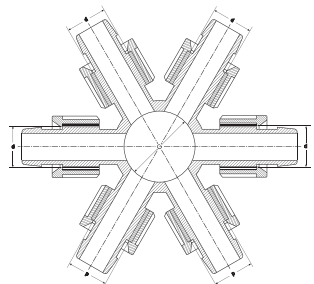
KOD CODE	d x G SIZE-mm	AMBALAJ ADEDİ PACKING QUANTITY	KOLİ ADEDİ BOX QUANTITY	ÇUVAL ADEDİ SACK QUANTITY
18162	6 / 17 x 1"	25	400	500
18164	6 / 22 x 1"	25	200	250
18165	6 / 25 x 1"	25	150	225

## YASSI DAMLAMA ÇOKLU DAĞITIM NİPELİ

TAPE MULTICOUPLING NIPPLE

РАСПРЕДЕЛИТЕЛЬНЫЙ НИППЕЛЬ ДЛЯ КАПЕЛЬНОЙ ЛЕНТЫ

نبل لوصلة التنقيط ذات التوزيع المتعدد



# SERTİFİKALARIMIZ / CERTIFICATES







Şabanođlu OSB Mahallesi Ulubatlı Caddesi No: 6 Tekkeköy SAMSUN TÜRKİYE  
Tel: +90 362 266 75 24 Faks: +90 362 266 77 51 GSM: +90 544 366 69 64  
www.poelsan.com poelsan@poelsan.com