



POELSAN®



DAMLA SULAMA EK PARÇALARI

DRIPLINE TAPE FITTINGS

Poelsan Dünya Firmalarıyla Rekabet Ediyor...

+ Poelsan, 1994 yılında henüz ülkemizde üretimi yapılmadığı için ithal edilen Polietilen Kangal Boru Bağlantı Adaptörlerini, kendi tesisinde üreterek piyasaya sunan ilk firma olmuştur.

Poelsan ürünleri, başta peyzaj sektörü olmak üzere, içme suyu şebekelerinde, tarım alanlarında, seralarda, damla sulama sistemlerinde güvenle kullanılabilir.

Poelsan, 52.000 m² alanda yıllık 9.500 ton plastik işleme kapasitesiyle üretim yapmaktadır. Poelsan, yurt içinde tüm illere yayılmış yaklaşık 400 bayi ile çalışmakta ve 56 ülkeye ihracat yapmaktadır.

Poelsan, 2.000'in üzerinde ürün çeşidine sahiptir ve sektördeki yeniliklere bağlı olarak mevcut ürün çeşidini sürekli olarak arttırmayı ve sektöründe bir dünya markası olmayı hedeflemektedir.

Poelsan is in the Global Market...

+ Poelsan is the first company that produced and marketed the Compression Fittings for PE Roll Pipes at its own plant, as the mentioned products cannot be produced in the country and consequently been imported up to the year 1994.

Our products can be used safely in the areas of landscaping, potable water networks, agricultural irrigation, drip irrigation and greenhouses.

Poelsan makes production in 52.000 m² area with its annual plastic process of 9.500 tones. Poelsan cooperates with 400 domestic distributors overall provinces in Turkey and also exports to 56 countries presently.

Poelsan has a wide product range consisting of more than 2.000 items and our company aims to extend its current product range consistently depending on the developments in the sector and to be a global brand.



SEKTÖRÜNDE DÜNYA MARKASI

WORLD'S LEADING BRAND IN THE INDUSTRY



56 2.000 Üzerinde **Ürün Çeşidi**
ÜLKEYE İHRACAT

More than 2.000 products type
in 56 countries



ALMANYA + ARJANTİN + ARNAVUTLUK + AVUSTRALYA + AZERBAYCAN
+ BELARUS + BOLİVYA + BULGARİSTAN + ENDONEZYA + ERMENİSTAN
ETİYOPYA + FAS + FİLİSTİN + FRANSA + GÜRCİSTAN + IRAK + İRAN
+ İSPANYA + İSRAİL + İTALYA + KARADAĞ + KATAR + KAZAKİSTAN
KIBRIS + KIRGIZİSTAN + KOSOVA + KUVEYT + LİBYA + LÜBNAN
+ MACARİSTAN + MISIR + MOLDOVA + NORVEÇ + PAKİSTAN + PERU +
POLONYA + PORTEKİZ + ROMANYA + RUSYA + SIRBİSTAN + SURİYE
+ SUUDİ ARABİSTAN + TAYLAND + TUNUS + TÜRKMENİSTAN + UKRAYNA +
ÜRDÜN + VENEZUELA + YEMEN + YENİ ZELANDA + YUNANİSTAN
ALBANIA + ARGENTINA + ARMENIA + AUSTRALIA + AZERBAIJAN
+ BELARUS + BOLIVIA + BULGARIA + CYPRUS + EGYPT + ETHIOPIA +
FRANCE + GEORGIA + GERMANY + GREECE + HUNGARY + INDONESIA
+ IRAN + IRAQ + ISRAEL + ITALY + JORDAN + KAZAKHSTAN +
KIRGHIZSTAN + KOSOVO + KUWAIT + LEBANON + LIBYA
MOLDOVA + MONTENEGRO + MOROCCO + NEW ZEALAND
NORWAY + PAKISTAN + PALESTINE
PERU + POLAND + PORTUGAL + QATAR
ROMANIA + RUSSIA + SAUDI ARABIA
SERBIA + SPAIN + SYRIA
THAILAND + TUNISIA
TURKMENISTAN
+ UKRAINE
VENEZUELA
YEMEN

DAMLA SULAMA EK PARÇALARI

DRIPLINE FITTINGS

ФИТИНГИ ДЛЯ ТРУБЫ КАПЕЛЬНОГО ПОЛИВА

قطع إضافية التجهيزات خط التنقيط

Özellikler

- + Darbelere karşı dayanıklı, yüksek kaliteli polipropilen hammaddeden üretilmiştir.
- + Ø16 mm ve Ø20 mm Damla Sulama Borularında kullanılır.
- + Grommet Conta ile çıkış almak için kullanılacak grommet contalı ürün çeşidine göre delik çapı 16 mm veya 20 mm olacak şekilde boru delinmelidir.
- + Contasız Çıkış, Layflat ve Alçak Yoğunluklu Polietilen (AYPE) Borulardan (Düz Damla Sulama Borusu), Ø16 mm ve Ø20 mm Damla Sulama Borularına çıkış almak için kullanılır. Contasız Çıkış Ucu ile çıkış almak için boru, delik çapı 8 mm olacak şekilde delinmelidir.
- + Contasız Çıkış Nipeli ürünü, Layflat Borulardan, Ø12 mm Spagetti Borulara çıkış almak için kullanılır. Contasız Çıkış Ucu ile çıkış almak için boru, delik çapı 8 mm olacak şekilde delinmelidir.
- + UV ışınlarını geçirmediği için yosunlanmaya ve bakteri üremesine izin vermez.
- + İç yüzeyleri homojen ve gözeneksizdir.
- + Suyun kokusunu ve tadını değiştirebilecek hiçbir yabancı madde içermez.

Specifications

- + It has been produced from high quality polypropylene raw material and it has resistance to impact.
- + Used with Ø16 mm and Ø20 mm Driplines.
- + For a proper offtake with the Grommet Gasket, the pipe should be punched 16 mm or 20 mm according to the grommet gasket to be used.
- + The items with offtake without gasket are used for joining the Layflat and Low Density Polyethylene (LDPE) Pipes (Without Drip Irrigation Pipe) With Drip Irrigation Pipe (Ø16 mm & Ø20 mm). For a proper offtake, the pipe should be punched 8 mm.
- + The Offtake Nipple item is used for joining the Layflat Pipes with Ø12 mm Microtube Pipes. For a proper offtake, the pipe should be punched 8 mm.
- + They prevent alga and bacteria forming due to UV proof (ultraviolet beam) structure.
- + It has a homogeneous and non-porous inner surface.
- + It does not contain any foreign substance which can change the taste or the smell of the water.


TS EN ISO 9261



DAMLA SULAMA EK PARÇALAR / DRIPLINE FITTINGS

قطع إضافية التجهيزات خط التنقيط / ФИТИНГИ ДЛЯ ТРУБЫ КАПЕЛЬНОГО ПОЛИВА

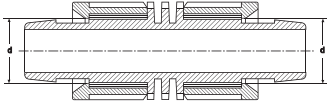


DAMLAMA NİPEL

DRIPLINE NIPPLE

НИППЕЛЬ ДЛЯ ТРУБЫ КАПЕЛЬНОГО ПОЛИВА

نبل خط التنقيط



KOD CODE	d x d SIZE-mm	AMBALAJ ADEDİ PACKING QUANTITY	KOLİ ADEDİ BOX QUANTITY	ÇUVAL ADEDİ SACK QUANTITY
16122	16 x 16	100	2000	2800
16142	20 x 16	100		
16144	20 x 20	100	1600	2000

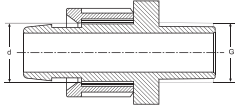


DAMLAMA - ERKEK NİPEL

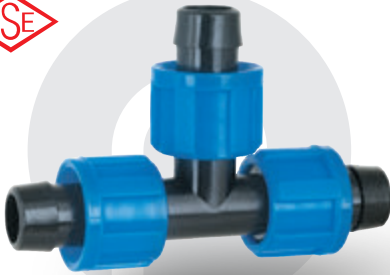
DRIPLINE - MALE NIPPLE

НИППЕЛЬ ДЛЯ ТРУБЫ КАПЕЛЬНОГО ПОЛИВА - «ШТУЦЕР»

خط التنقيط - نبل ذكر



KOD CODE	d x G SIZE-mm	AMBALAJ ADEDİ PACKING QUANTITY	KOLİ ADEDİ BOX QUANTITY	ÇUVAL ADEDİ SACK QUANTITY
16221	16 x 1/2"	100	2600	3200
16222	16 x 3/4"	100	2400	3000
16241	20 x 1/2"	100	2000	2700
16242	20 x 3/4"	100	2000	2500

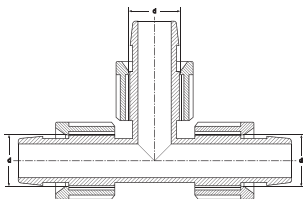


DAMLAMA TE

DRIPLINE TEE

ТРОЙНИК ДЛЯ ТРУБЫ КАПЕЛЬНОГО ПОЛИВА

خط تنقيط تي



KOD CODE	d x d x d SIZE-mm	AMBALAJ ADEDİ PACKING QUANTITY	KOLİ ADEDİ BOX QUANTITY	ÇUVAL ADEDİ SACK QUANTITY
16322	16 x 16 x 16	100	1200	1600
16342	20 x 16 x 20	100	800	1100
16344	20 x 20 x 20	100	800	1000

DAMLA SULAMA EK PARÇALAR / DRIPLINE FITTINGS

KOD CODE	d x G x d SIZE-mm	AMBALAJ ADEDİ PACKING QUANTITY	KOLİ ADEDİ BOX QUANTITY	ÇUVAL ADEDİ SACK QUANTITY
16421	16 x 1/2" x 16	100	1400	1800
16422	16 x 3/4" x 16	100	1200	1600
16441	20 x 1/2" x 20	100	1000	1300
16442	20 x 3/4" x 20	100	800	1100
16443	20 x 1" x 20	100	700	1000

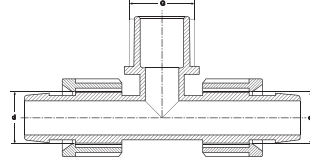


DAMLAMA - ERKEK TE

DRIPLINE - MALE TEE

ТРОЙНИК ДЛЯ ТРУБЫ КАПЕЛЬНОГО ПОЛИВА - «ШТУЦЕР»

خط تنقيط - تي ذكر



KOD CODE	d x d SIZE-mm	AMBALAJ ADEDİ PACKING QUANTITY	KOLİ ADEDİ BOX QUANTITY	ÇUVAL ADEDİ SACK QUANTITY
16522	16 x 16	100	1800	2500
16544	20 x 20	100	1200	1600

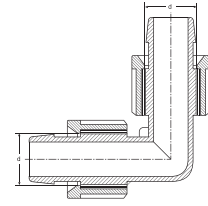


DAMLAMA DİRSEK

DRIPLINE ELBOW

КОЛЕНО ДЛЯ ТРУБЫ КАПЕЛЬНОГО ПОЛИВА

كوع خط التنقيط



KOD CODE	d x G SIZE-mm	AMBALAJ ADEDİ PACKING QUANTITY	KOLİ ADEDİ BOX QUANTITY	ÇUVAL ADEDİ SACK QUANTITY
16621	16 x 1/2"	100	2400	3000
16622	16 x 3/4"	100	2000	2500
16641	20 x 1/2"	100	1800	2300
16642	20 x 3/4"	100	1400	2000

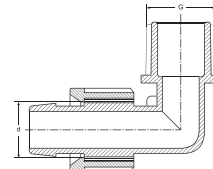


DAMLAMA - ERKEK DİRSEK

DRIPLINE - MALE ELBOW

КОЛЕНО ДЛЯ ТРУБЫ КАПЕЛЬНОГО ПОЛИВА - «ШТУЦЕР»

خط التنقيط - كوع ذكر



قطع إضافية التجهيزات خط التنقيط / ФИТИНГИ ДЛЯ ТРУБЫ КАПЕЛЬНОГО ПОЛИВА

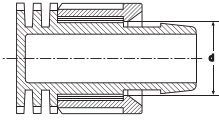
DAMLAMA SULAMA EK PARÇALAR / DRIPLINE FITTINGS

قطع إضافية التجهيزات خط التنقيط / ФИТИНГИ ДЛЯ ТРУБЫ КАПЕЛЬНОГО ПОЛИВА



DAMLAMA KÖR TAPA

DRIPLINE END CAP
ЗАГЛУШКА ДЛЯ ТРУБЫ КАПЕЛЬНОГО ПОЛИВА
سدادة في نهاية خط التنقيط

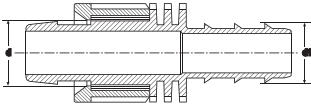


KOD CODE	d SIZE-mm	AMBALAJ ADEDİ PACKING QUANTITY	KOLİ ADEDİ BOX QUANTITY	ÇUVAL ADEDİ SACK QUANTITY
16722	16	100	3600	4500
16744	20	100	2800	3500



DAMLAMA - KURTAĞZI NİPEL

DRIPLINE - BARBED NIPPLE
НИПЕЛЬ ДЛЯ ТРУБЫ КАПЕЛЬНОГО ПОЛИВА - РЕБРИСТЫЙ
خط التنقيط - نبل التعشيق

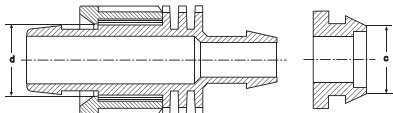


KOD CODE	d x d ₁ SIZE-mm	AMBALAJ ADEDİ PACKING QUANTITY	KOLİ ADEDİ BOX QUANTITY	ÇUVAL ADEDİ SACK QUANTITY
16766	16 x 16	100	2400	3000
16788	20 x 20	100		



DAMLAMA - GROMMET NİPEL

DRIPLINE - GROMMET NIPPLE
НИПЕЛЬ ДЛЯ ТРУБЫ КАПЕЛЬНОГО ПОЛИВА - УПЛОТНИТЕЛЬНОЕ КОЛЬЦО
خط التنقيط - نبل حلقة التثبيت



KOD CODE	d x c SIZE-mm	AMBALAJ ADEDİ PACKING QUANTITY	KOLİ ADEDİ BOX QUANTITY	ÇUVAL ADEDİ SACK QUANTITY
16822	16 x 16	100	2400	3000
16842	20 x 16	100	2000	2700
16844	20 x 20	100	1600	2200

DAMLA SULAMA EK PARÇALAR / DRIPLINE FITTINGS

قطع إضافية التجهيزات خط التنقيط / ФИТИНГИ ДЛЯ ТРУБЫ КАПЕЛЬНОГО ПОЛИВА

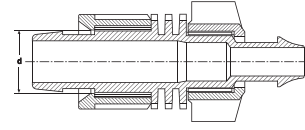


KOD CODE	d SIZE-mm	AMBALAJ ADEDİ PACKING QUANTITY	KOLİ ADEDİ BOX QUANTITY	ÇUVAL ADEDİ SACK QUANTITY
16862	16	100	2200	2800
16884	20	100	1800	2200

DAMLAMA - CONTASIZ ÇIKIŞ NİPELİ

DRIPLINE - OFFTAKE NIPPLE WITHOUT GASKET
НИППЕЛЬ ДЛЯ ТРУБЫ КАПЕЛЬНОГО ПОЛИВА – ПОДЖИМ

خط التنقيط - نبل المسرب

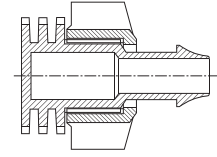


KOD CODE	EBAT SIZE-mm	AMBALAJ ADEDİ PACKING QUANTITY	KOLİ ADEDİ BOX QUANTITY	ÇUVAL ADEDİ SACK QUANTITY
16888	8	100	3600	4500

CONTASIZ ÇIKIŞ KÖR TAPA

OFFTAKE WITHOUT GASKET END CAP
КОНЦОВАЯ ЗАГЛУШКА БЕЗ ПРОКЛАДКИ

نهاية كبس بدون ربر

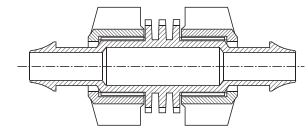


KOD CODE	EBAT SIZE-mm	AMBALAJ ADEDİ PACKING QUANTITY	KOLİ ADEDİ BOX QUANTITY	ÇUVAL ADEDİ SACK QUANTITY
16899	12	100	2200	2800

CONTASIZ ÇIKIŞ NİPELİ

OFFTAKE NIPPLE WITHOUT GASKET
НИППЕЛЬ С ПОДЖИМОМ

نبل المسرب



DAMLAMA SULAMA EK PARÇALAR / DRIPLINE FITTINGS

قطع إضافية للتجهيزات خط التنقيط / ФИТИНГИ ДЛЯ ТРУБЫ КАПЕЛЬНОГО ПОЛИВА

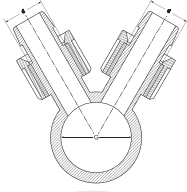


DAMLAMA ÇOKLU DAĞITIM NİPELİ

DRIPLINE MULTICOUPLING NIPPLE

РАСПРЕДЕЛИТЕЛЬНЫЙ НИППЕЛЬ ДЛЯ ТРУБЫ КАПЕЛЬНОГО ПОЛИВА

نبيل التوزيع المتعدد لخط التنقيط



KOD CODE	d x G SIZE-mm	AMBALAJ ADEDİ PACKING QUANTITY	KOLİ ADEDİ BOX QUANTITY	ÇUVAL ADEDİ SACK QUANTITY
16922	2 / 16 x 1"	25	800	1000
16924	2 / 20 x 1"	25	650	850

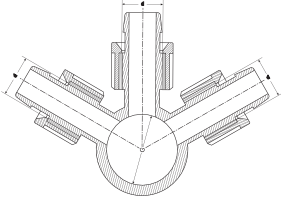


DAMLAMA ÇOKLU DAĞITIM NİPELİ

DRIPLINE MULTICOUPLING NIPPLE

РАСПРЕДЕЛИТЕЛЬНЫЙ НИППЕЛЬ ДЛЯ ТРУБЫ КАПЕЛЬНОГО ПОЛИВА

نبيل التوزيع المتعدد لخط التنقيط



KOD CODE	d x G SIZE-mm	AMBALAJ ADEDİ PACKING QUANTITY	KOLİ ADEDİ BOX QUANTITY	ÇUVAL ADEDİ SACK QUANTITY
16932	3 / 16 x 1"	25	650	800
16934	3 / 20 x 1"	25	450	600

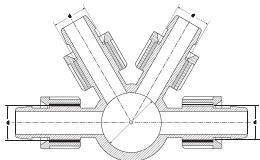


DAMLAMA ÇOKLU DAĞITIM NİPELİ

DRIPLINE MULTICOUPLING NIPPLE

РАСПРЕДЕЛИТЕЛЬНЫЙ НИППЕЛЬ ДЛЯ ТРУБЫ КАПЕЛЬНОГО ПОЛИВА

نبيل التوزيع المتعدد لخط التنقيط



KOD CODE	d x G SIZE-mm	AMBALAJ ADEDİ PACKING QUANTITY	KOLİ ADEDİ BOX QUANTITY	ÇUVAL ADEDİ SACK QUANTITY
16942	4 / 16 x 1"	25	500	650
16944	4 / 20 x 1"	25	350	500

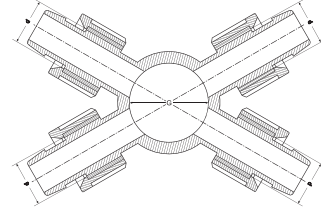
DAMLA SULAMA EK PARÇALAR / DRIPLINE FITTINGS

KOD CODE	d x G SIZE-mm	AMBALAJ ADEDİ PACKING QUANTITY	KOLİ ADEDİ BOX QUANTITY	ÇUVAL ADEDİ SACK QUANTITY
16945	4X / 16 x 1"	25	500	650
16947	4X / 20 x 1"	25	350	450



DAMLAMA ÇOKLU DAĞITIM NİPELİ

DRIPLINE MULTICOUPLING NIPPLE
РАСПРЕДЕЛИТЕЛЬНЫЙ НИППЕЛЬ ДЛЯ ТРУБЫ КАПЕЛЬНОГО ПОЛИВА
نبل التوزيع المتعدد لخط التنقيط

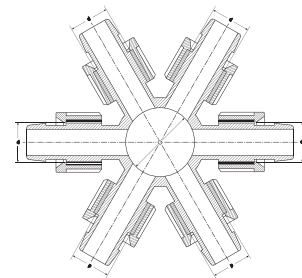


KOD CODE	d x G SIZE-mm	AMBALAJ ADEDİ PACKING QUANTITY	KOLİ ADEDİ BOX QUANTITY	ÇUVAL ADEDİ SACK QUANTITY
16962	6 / 16 x 1"	25	350	450
16964	6 / 20 x 1"	25	250	325



DAMLAMA ÇOKLU DAĞITIM NİPELİ

DRIPLINE MULTICOUPLING NIPPLE
РАСПРЕДЕЛИТЕЛЬНЫЙ НИППЕЛЬ ДЛЯ ТРУБЫ КАПЕЛЬНОГО ПОЛИВА
نبل التوزيع المتعدد لخط التنقيط



قطع إضافية التجهيزات خط التنقيط / ФИТИНГИ ДЛЯ ТРУБЫ КАПЕЛЬНОГО ПОЛИВА

SERTİFİKALARIMIZ / CERTIFICATES







Şabanođlu OSB Mahallesi Ulubatlı Caddesi No: 6 Tekkeköy SAMSUN TÜRKİYE
Tel: +90 362 266 75 24 Faks: +90 362 266 77 51 GSM: +90 544 366 69 64
www.poelsan.com poelsan@poelsan.com