



POELSAN®



**DAMLA SULAMA KURTAĞZI
EK PARÇALARI**
DRIPLINE BARBED FITTINGS

Poelsan Dünya Firmalarıyla Rekabet Ediyor...

+ Poelsan, 1994 yılında henüz ülkemizde üretimi yapılmadığı için ithal edilen Polietilen Kangal Boru Bağlantı Adaptörlerini, kendi tesisinde üreterek piyasaya sunan ilk firma olmuştur.

Poelsan ürünleri, başta peyzaj sektörü olmak üzere, içme suyu şebekelerinde, tarım alanlarında, seralarda, damla sulama sistemlerinde güvenle kullanılabilir.

Poelsan, 52.000 m² alanda yıllık 9.500 ton plastik işleme kapasitesiyle üretim yapmaktadır. Poelsan, yurt içinde tüm illere yayılmış yaklaşık 400 bayi ile çalışmakta ve 56 ülkeye ihracat yapmaktadır.

Poelsan, 2.000'in üzerinde ürün çeşidine sahiptir ve sektördeki yeniliklere bağlı olarak mevcut ürün çeşidini sürekli olarak arttırmayı ve sektöründe bir dünya markası olmayı hedeflemektedir.

Poelsan is in the Global Market...

+ Poelsan is the first company that produced and marketed the Compression Fittings for PE Roll Pipes at its own plant, as the mentioned products cannot be produced in the country and consequently been imported up to the year 1994.

Our products can be used safely in the areas of landscaping, potable water networks, agricultural irrigation, drip irrigation and greenhouses.

Poelsan makes production in 52.000 m² area with its annual plastic process of 9.500 tones. Poelsan cooperates with 400 domestic distributors overall provinces in Turkey and also exports to 56 countries presently.

Poelsan has a wide product range consisting of more than 2.000 items and our company aims to extend its current product range consistently depending on the developments in the sector and to be a global brand.



SEKTÖRÜNDE DÜNYA MARKASI

WORLD'S LEADING BRAND IN THE INDUSTRY



56 2.000 Üzerinde **Ürün Çeşidi**
ÜLKEYE İHRACAT

More than 2.000 products type
in 56 countries



ALMANYA + ARJANTİN + ARNAVUTLUK + AVUSTRALYA + AZERBAYCAN
+ BELARUS + BOLİVYA + BULGARİSTAN + ENDONEZYA + ERMENİSTAN
ETİYOPYA + FAS + FİLİSTİN + FRANSA + GÜRCİSTAN + IRAK + İRAN
+ İSPANYA + İSRAİL + İTALYA + KARADAĞ + KATAR + KAZAKİSTAN
KIBRIS + KIRGIZİSTAN + KOSOVA + KUVEYT + LİBYA + LÜBNAN
+ MACARİSTAN + MISIR + MOLDOVA + NORVEÇ + PAKİSTAN + PERU +
POLONYA + PORTEKİZ + ROMANYA + RUSYA + SİRBİSTAN + SURİYE
+ SUUDİ ARABİSTAN + TAYLAND + TUNUS + TÜRKMENİSTAN + UKRAYNA +
ÜRDÜN + VENEZUELA + YEMEN + YENİ ZELANDA + YUNANİSTAN
ALBANIA + ARGENTINA + ARMENIA + AUSTRALIA + AZERBAIJAN
+ BELARUS + BOLIVIA + BULGARIA + CYPRUS + EGYPT + ETHIOPIA +
FRANCE + GEORGIA + GERMANY + GREECE + HUNGARY + INDONESIA
+ IRAN + IRAQ + ISRAEL + ITALY + JORDAN + KAZAKHSTAN +
KIRGHIZSTAN + KOSOVO + KUWAIT + LEBANON + LIBYA
MOLDOVA + MONTENEGRO + MOROCCO + NEW ZEALAND
NORWAY + PAKISTAN + PALESTINE
PERU + POLAND + PORTUGAL + QATAR
ROMANIA + RUSSIA + SAUDI ARABIA
SERBIA + SPAIN + SYRIA
THAILAND + TUNISIA
TURKMENISTAN
+ UKRAINE
VENEZUELA
YEMEN

DAMLA SULAMA KURTAĞZI EK PARÇALARI

DRIPLINE BARBED FITTINGS

ФИТИНГИ РЕБРИСТЫЕ ДЛЯ КАПЕЛЬНОГО ОРОШЕНИЯ

قطع إضافية لتعشيقه التنقيط

Özellikler

- + Darbelere karşı dayanıklı, yüksek kaliteli polipropilen hammaddeden üretilmiştir.
- + Ø16 mm ve Ø20 mm Alçak Yoğunluklu Polietilen (AYPE) Borularda (Düz Damla Sulama Borusu) kullanılır.
- + Ø16 mm ve Ø20 mm Damla Sulama Borularında kullanılır.
- + Grommet Conta ile çıkış almak için kullanılacak Grommet Contalı ürün çeşidine göre delik çapı 16 mm veya 20 mm olacak şekilde boru delinmelidir.
- + Kurtağzı Grommet Conta ile çıkış almak için kullanılacak Kurtağzı Ek Parça çeşidine göre delik çapı 18 mm olacak şekilde boru delinmelidir.
- + Kurtağzı Ek Parçalar boruya takıldıktan sonra boru, Poelsan Boru Kelepçesi ile sıkıştırılmalıdır.
- + UV ışınlarını geçirmediği için yosunlanmaya ve bakteri üremesine izin vermez.
- + İç yüzeyleri homojen ve gözeneksizdir.
- + Suyun kokusunu ve tadını değiştirebilecek hiçbir yabancı madde içermez.

Specifications

- + It has been produced from high quality polypropylene raw material and it has resistance to impact.
- + Used with Ø16 mm and Ø20 mm Low Density Polyethylene (LDPE) Pipes (Without Drip Irrigation Pipe).
- + Used with Ø16 mm and Ø20 mm Drip Irrigation Pipe.
- + For a proper offtake with the Grommet Gasket, the pipe should be punched 16 mm or 20 mm according to the Grommet Gasket to be used.
- + For a proper offtake with the Barbed Grommet Gasket, the pipe should be punched 18 mm according to the Barbed Fitting to be used.
- + The pipe should be clamped with Poelsan Pipe Clip after the Barbed Fittings are installed to the pipe.
- + They prevent alga and bacteria forming due to UV proof (ultraviolet beam) structure.
- + It has a homogeneous and non-porous inner surface.
- + It does not contain any foreign substance which can change the taste or the smell of the water.



TS EN ISO 9261

DAMLA SULAMA KURTAĞZI EK PARÇALAR / DRIPLINE BARBED FITTINGS

KOD CODE	d x d SIZE-mm	AMBALAJ ADEDİ PACKING QUANTITY	KOLİ ADEDİ BOX QUANTITY	ÇUVAL ADEDİ SACK QUANTITY
15122	16 x 16	100	5000	6500
15142	20 x 16	100	3200	4200
15144	20 x 20	100	3000	3700

16 x 16 Ürünümüz gri renktedir. / The product of 16 x 16 is grey.

KOD CODE	d x G SIZE-mm	AMBALAJ ADEDİ PACKING QUANTITY	KOLİ ADEDİ BOX QUANTITY	ÇUVAL ADEDİ SACK QUANTITY
15221	16 x 1/2"	100	2800	3300
15222	16 x 3/4"	100	2500	3200
15241	20 x 1/2"	100	2200	3000
15242	20 x 3/4"	100	2000	2700
15252	25 x 3/4"	100	1200	1600
15253	25 x 1"	100	1200	1500
15263	32 x 1"	100	800	1100
15274	40 x 1 1/4"	50	450	600
15285	50 x 1 1/2"	25	300	400
15296	63 x 2"	15	180	240

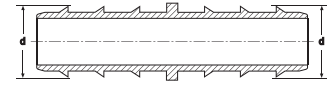
KOD CODE	d x d x d SIZE-mm	AMBALAJ ADEDİ PACKING QUANTITY	KOLİ ADEDİ BOX QUANTITY	ÇUVAL ADEDİ SACK QUANTITY
15322	16 x 16 x 16	100	2400	3300
15324	16 x 20 x 16	100	2000	2600
15342	20 x 16 x 20	100	1400	1800
15344	20 x 20 x 20	100	1200	1700



KURTAĞZI NİPEL

BARBED NIPPLE
НИППЕЛЬ РЕБРИСТЫЙ

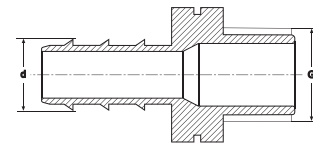
نبل التعشيقية



KURTAĞZI - ERKEK NİPEL

BARBED - MALE NIPPLE
НИППЕЛЬ РЕБРИСТЫЙ - «ШТУЦЕР»

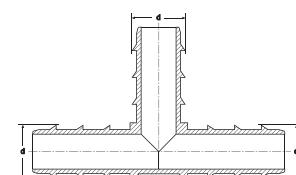
التعشيقية - نبل ذكر



KURTAĞZI TE

BARBED TEE
ТРОЙНИК РЕБРИСТЫЙ

تعشيقية تي



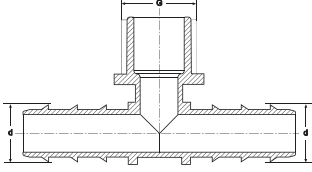
قطع إضافية لتعشيقية التنقيط / ФИТИНГИ РЕБРИСТЫЕ ДЛЯ КАПЕЛЬНОГО ОРОШЕНИЯ

DAMLA SULAMA KURTAĞZI EK PARÇALAR / DRIPLINE BARBED FITTINGS

قطع إضافية لتعشيقه التقيط / ФИТИНГИ РЕБРИСТЫЕ ДЛЯ КАПЕЛЬНОГО ОРОШЕНИЯ/



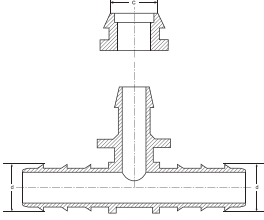
KURTAĞZI - ERKEK TE
BARBED - MALE TEE
ТРОЙНИК РЕБРИСТЫЙ - «ШТУЦЕР»
تعشيقه - تي ذكر



KOD CODE	d x G x d SIZE-mm	AMBALAJ ADEDİ PACKING QUANTITY	KOLİ ADEDİ BOX QUANTITY	ÇUVAL ADEDİ SACK QUANTITY
15421	16 x 1/2" x 16	100	2200	2800
15422	16 x 3/4" x 16	100	2000	2500
15441	20 x 1/2" x 20	100	1400	1800
15442	20 x 3/4" x 20	100	1200	1500
15443	20 x 1" x 20	100	1000	1300



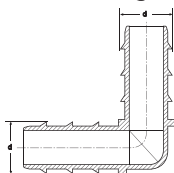
KURTAĞZI - GROMMET TE
BARBED - GROMMET TEE
ТРОЙНИК РЕБРИСТЫЙ - УПЛОТНИТЕЛЬНОЕ КОЛЬЦО
تعشيقه - حلقة للتثبيت تي



KOD CODE	d x c x d SIZE-mm	AMBALAJ ADEDİ PACKING QUANTITY	KOLİ ADEDİ BOX QUANTITY	ÇUVAL ADEDİ SACK QUANTITY
15466	16 x 16 x 16	100	2400	3000
15468	16 x 20 x 16	100	2000	2500
15488	20 x 20 x 20	100	1200	1500



KURTAĞZI DİRSEK
BARBED ELBOW
КОЛЕНА РЕБРИСТОЕ
كوع التعشيقه



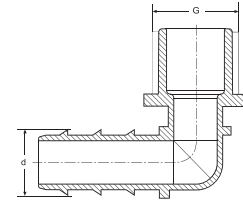
KOD CODE	d x d SIZE-mm	AMBALAJ ADEDİ PACKING QUANTITY	KOLİ ADEDİ BOX QUANTITY	ÇUVAL ADEDİ SACK QUANTITY
15522	16 x 16	100	4000	5000
15544	20 x 20	100	2000	2800

KOD CODE	d x G SIZE-mm	AMBALAJ ADEDİ PACKING QUANTITY	KOLİ ADEDİ BOX QUANTITY	ÇUVAL ADEDİ SACK QUANTITY
15621	16 x ½"	100	3400	4200
15622	16 x ¾"	100	2600	3400
15641	20 x ½"	100	2400	3200
15642	20 x ¾"	100	2000	2500



KURTAĞZI - ERKEK DİRSEK

BARBED - MALE ELBOW
КОЛЕНО РЕБРИСТОЕ - «ШТУЦЕР»
تعشيقه - كوع ذكر

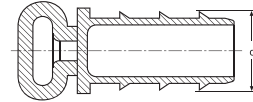


KOD CODE	d SIZE-mm	AMBALAJ ADEDİ PACKING QUANTITY	KOLİ ADEDİ BOX QUANTITY	ÇUVAL ADEDİ SACK QUANTITY
15722	16	100	7500	9000
15744	20	100	4200	5000



KURTAĞZI KÖR TAPA

BARBED END CAP
ЗАГЛУШКА РЕБРИСТАЯ
سدادة نهاية التعشيقه

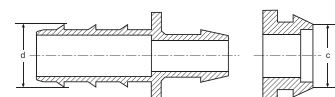


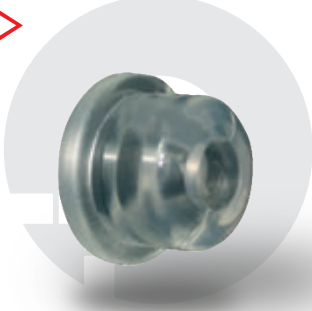
KOD CODE	d x c SIZE-mm	AMBALAJ ADEDİ PACKING QUANTITY	KOLİ ADEDİ BOX QUANTITY	ÇUVAL ADEDİ SACK QUANTITY
15822	16 x 16	100	4000	5000
15842	20 x 16	100	3200	4000



KURTAĞZI - GROMMET NİPEL

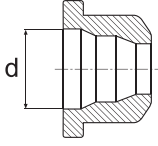
BARBED - GROMMET NIPPLE
НИПЕЛЬ РЕБРИСТЫЙ - УПЛОТНИТЕЛЬНОЕ
تعشيقه - نبل حلقة التثبيت





KURTAĞZI GROMMET CONTA

BARBED GROMMET GASKET
РЕБРИСТОЕ УПЛОТНИТЕЛЬНОЕ КОЛЬЦО
حلقة تثبيت التعشيقه



KOD CODE	d SIZE-mm	AMBALAJ ADEDİ PACKING QUANTITY	KOLİ ADEDİ BOX QUANTITY	ÇUVAL ADEDİ SACK QUANTITY
15966	16	100	5000	7500



BORU KELEPÇESİ

PIPE CLIP
ЗАЖИМ ДЛЯ ТРУБЫ
ماسكة الأنبوب

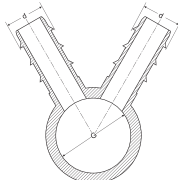


KOD CODE	EBAT SIZE-mm	AMBALAJ ADEDİ PACKING QUANTITY	KOLİ ADEDİ BOX QUANTITY	ÇUVAL ADEDİ SACK QUANTITY
16022	16	500	23000	25000
16044	20	500	16000	19000



KURTAĞZI ÇOKLU DAĞITIM NİPELİ

BARBED MULTICOUPLING NIPPLE
РАСПРЕДЕЛИТЕЛЬНЫЙ НИППЕЛЬ РЕБРИСТЫЙ
نبل تعشيقه التوزيع المتعدد

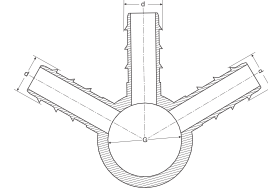


KOD CODE	d x G SIZE-mm	AMBALAJ ADEDİ PACKING QUANTITY	KOLİ ADEDİ BOX QUANTITY	ÇUVAL ADEDİ SACK QUANTITY
15922	2 / 16 x 1"	25	950	1250
15924	2 / 20 x 1"	25	700	850

KOD CODE	d x G SIZE-mm	AMBALAJ ADEDİ PACKING QUANTITY	KOLİ ADEDİ BOX QUANTITY	ÇUVAL ADEDİ SACK QUANTITY
15932	3 / 16 x 1"	25	750	900
15934	3 / 20 x 1"	25	500	700



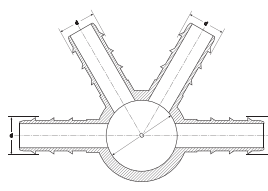
KURTAĞZI ÇOKLU DAĞITIM NİPELİ
BARBED MULTICOUPLING NIPPLE
РАСПРЕДЕЛИТЕЛЬНЫЙ НИППЕЛЬ РЕБРИСТЫЙ
نبل تعشيقية التوزيع المتعدد



KOD CODE	d x G SIZE-mm	AMBALAJ ADEDİ PACKING QUANTITY	KOLİ ADEDİ BOX QUANTITY	ÇUVAL ADEDİ SACK QUANTITY
15942	4 / 16 x 1"	25	650	850
15944	4 / 20 x 1"	25	400	550



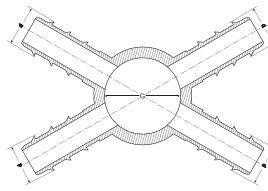
KURTAĞZI ÇOKLU DAĞITIM NİPELİ
BARBED MULTICOUPLING NIPPLE
РАСПРЕДЕЛИТЕЛЬНЫЙ НИППЕЛЬ РЕБРИСТЫЙ
نبل تعشيقية التوزيع المتعدد



KOD CODE	d x G SIZE-mm	AMBALAJ ADEDİ PACKING QUANTITY	KOLİ ADEDİ BOX QUANTITY	ÇUVAL ADEDİ SACK QUANTITY
15945	4X / 16 x 1"	25	550	750
15947	4X / 20 x 1"	25	375	500



KURTAĞZI ÇOKLU DAĞITIM NİPELİ
BARBED MULTICOUPLING NIPPLE
РАСПРЕДЕЛИТЕЛЬНЫЙ НИППЕЛЬ РЕБРИСТЫЙ
نبل تعشيقية التوزيع المتعدد

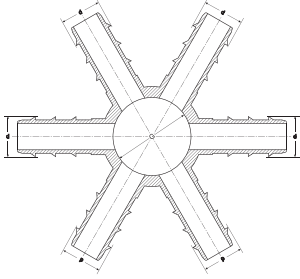




KOD CODE	d x G SIZE-mm	AMBALAJ ADEDİ PACKING QUANTITY	KOLİ ADEDİ BOX QUANTITY	ÇUVAL ADEDİ SACK QUANTITY
15962	6 / 16 x 1"	25	450	600
15964	6 / 20 x 1"	25	300	375

KURTAĞZI ÇOKLU DAĞITIM NİPELİ

BARBED MULTICOUPLING NIPPLE
РАСПРЕДЕЛИТЕЛЬНЫЙ НИППЕЛЬ РЕБРИСТЫЙ
نبل تعشيقه التوزيع المتعدد



KOD CODE	DELİK ÇAPI SIZE-mm	AMBALAJ ADEDİ PACKING QUANTITY	KOLİ ADEDİ BOX QUANTITY	ÇUVAL ADEDİ SACK QUANTITY
16096	16	1	1000	1000
16098	20	1	1000	1000



BORU DELME APARATI

DRILLER
ДЫРОКОЛ ДЛЯ ТРУБ
حافر الأنبوب

KOD CODE	DELİK ÇAPI SIZE-mm	AMBALAJ ADEDİ PACKING QUANTITY	KOLİ ADEDİ BOX QUANTITY	ÇUVAL ADEDİ SACK QUANTITY
16092	16	1	200	250
16094	20	1	200	250



BORU DELME EL APARATI

MANUEL DRILLER
ДЫРОКОЛ ДЛЯ ТРУБ
حافر الأنبوب

SERTİFİKALARIMIZ / CERTIFICATES







Şabanođlu OSB Mahallesi Ulubatlı Caddesi No: 6 Tekkeköy SAMSUN TÜRKİYE
Tel: +90 362 266 75 24 Faks: +90 362 266 77 51 GSM: +90 544 366 69 64
www.poelsan.com poelsan@poelsan.com